



COMF ELECTRONIC COMPANY

EXPORTERS, IMPORTERS & MANUFACTURERS

香港九龍灣臨興街32號 美羅中心1期 15樓11室

Flat 11, 15/F., METRO CENTRE 1, 32 LAM HING ST.,
KOWLOON BAY, HONG KONG

TEL: (852) 2770 5181

FAX: (852) 2798 8129

WEB: www.comf-hk.com

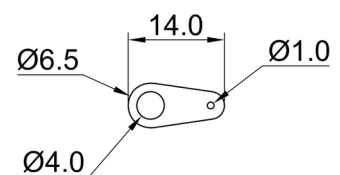
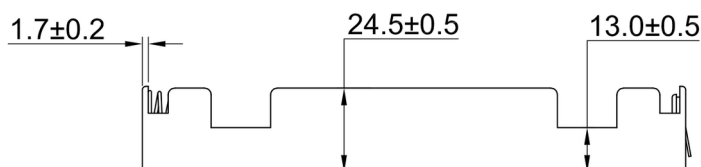
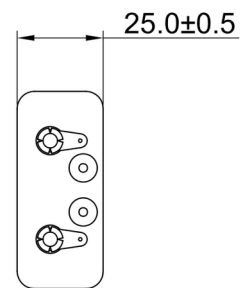
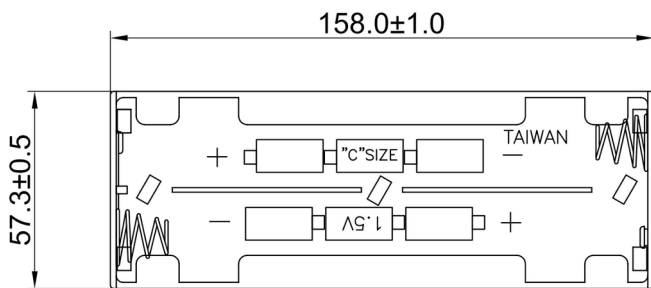
Email: sales@comf-hk.com

Product Data Sheet

BH-261D

Specification

Cell Size:	6 X C Cells, UM-2, R14
Body:	Polypropylene 94HB, Black
Terminals:	Nickel plated brass
Springs:	Ø0.8mm Nickel plated 65C spring steel
Compliance:	



SOLDER LUG